

# 1MBI600NP-060

# 1MBI600NN-060

IGBT Module

600V / 600A 1 in one-package

## ■ Features

- High speed switching
- Voltage drive
- Low inductance module structure

## ■ Applications

- Inverter for Motor drive
- AC and DC Servo drive amplifier
- Uninterruptible power supply
- Industrial machines, such as Welding machines



## ■ Maximum ratings and characteristics

### ● Absolute maximum ratings (at Tc=25°C unless otherwise specified)

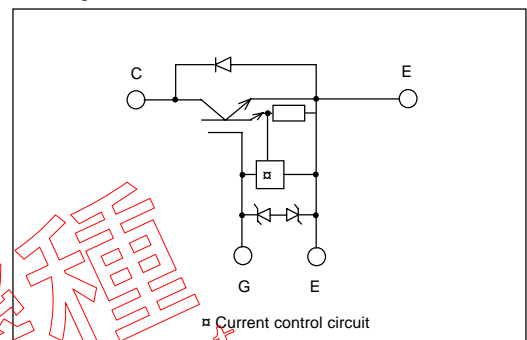
Item	Symbol	Rating	Unit
Collector-Emitter voltage	V <sub>CES</sub>	600	V
Gate-Emitter voltage	V <sub>GES</sub>	±20	V
Collector current	Continuous	I <sub>c</sub>	600 A
	1ms	I <sub>c</sub> pulse	1200 A
	Continuous	-I <sub>c</sub>	600 A
	1ms	-I <sub>c</sub> pulse	1200 A
Max. power dissipation	P <sub>c</sub>	2000	W
Operating temperature	T <sub>j</sub>	+150	°C
Storage temperature	T <sub>stg</sub>	-40 to +125	°C
Isolation voltage	V <sub>is</sub>	AC 2500 (1min.)	V
Screw torque	Mounting *1	3.5	N·m
	Terminals *2	4.5	N·m
	Terminals *3	1.7	N·m

\*1: Recommendable value : 2.5 to 3.5 N·m (M5) or (M6)

\*2: Recommendable value : 3.5 to 4.5 N·m (M6)

\*3: Recommendable value : 1.3 to 1.7 N·m (M4)

## ■ Equivalent Circuit Schematic



### ● Electrical characteristics (at Tj=25°C unless otherwise specified)

Item	Symbol	Characteristics			Conditions	Unit
		Min.	Typ.	Max.		
Zero gate voltage collector current	I <sub>CES</sub>	-	-	4.0	V <sub>GE</sub> =0V, V <sub>CE</sub> =600V	mA
Gate-Emitter leakage current	I <sub>GES</sub>	-	-	60	V <sub>CE</sub> =0V, V <sub>GE</sub> =±20V	μA
Gate-Emitter threshold voltage	V <sub>GE(th)</sub>	4.5	-	7.5	V <sub>CE</sub> =20V, I <sub>c</sub> =600mA	V
Collector-Emitter saturation voltage	V <sub>CE(sat)</sub>	-	-	2.8	V <sub>GE</sub> =15V, I <sub>c</sub> =600A	V
Input capacitance	C <sub>ies</sub>	-	39600	-	V <sub>GE</sub> =0V	pF
Output capacitance	C <sub>oes</sub>	-	8800	-	V <sub>CE</sub> =10V	
Reverse transfer capacitance	C <sub>res</sub>	-	4000	-	f=1MHz	
Turn-on time	t <sub>on</sub>	-	0.6	1.2	V <sub>CC</sub> =300V	μs
	t <sub>r</sub>	-	0.2	0.6	I <sub>c</sub> =600A	
Turn-off time	t <sub>off</sub>	-	0.6	1.0	V <sub>GE</sub> =±15V	μs
	t <sub>f</sub>	-	0.2	0.35	R <sub>G</sub> =2.7 ohm	
Diode forward on voltage	V <sub>F</sub>	-	-	3.0	I <sub>F</sub> =600A, V <sub>GE</sub> =0V	V
Reverse recovery time	t <sub>rr</sub>	-	-	0.3	I <sub>F</sub> =600A	μs

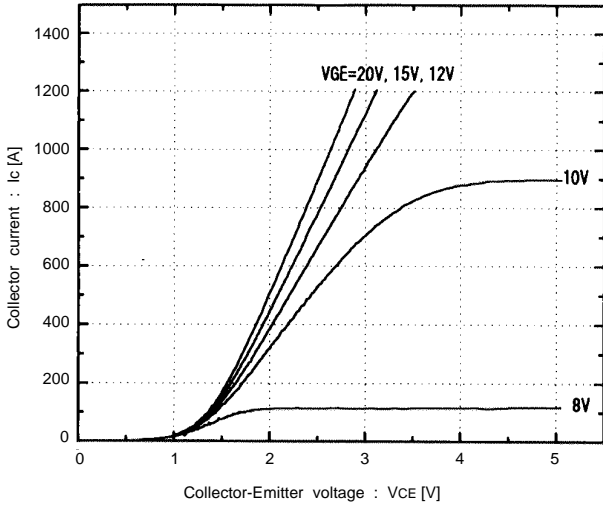
### ● Thermal resistance characteristics

Item	Symbol	Characteristics			Conditions	Unit
		Min.	Typ.	Max.		
Thermal resistance	R <sub>th(j-c)</sub>	-	-	0.063	IGBT	°C/W
	R <sub>th(j-c)</sub>	-	-	0.11	Diode	°C/W
	R <sub>th(c-f)</sub> *4	-	0.0125	-	the base to cooling fin	°C/W

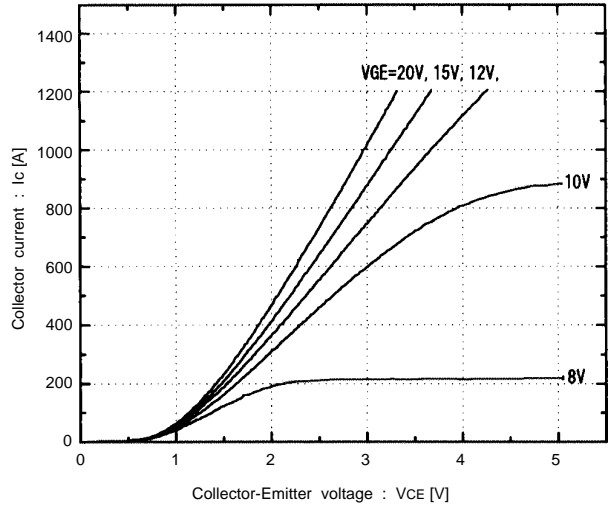
\*4 : This is the value which is defined mounting on the additional cooling fin with thermal compound

Characteristics (Representative)

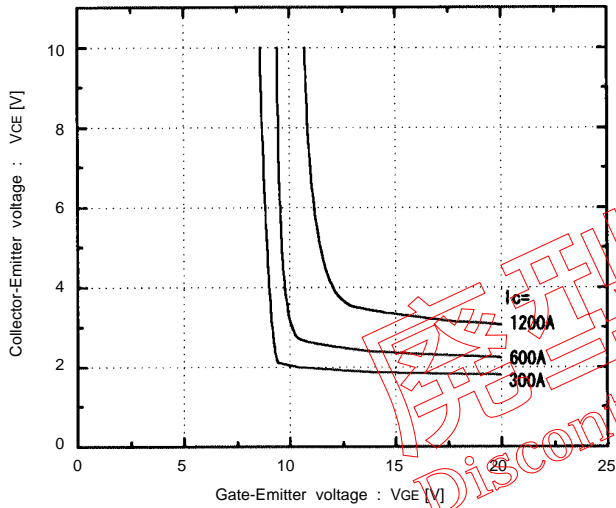
Collector current vs. Collector-Emitter voltage  
T<sub>J</sub>=25°C



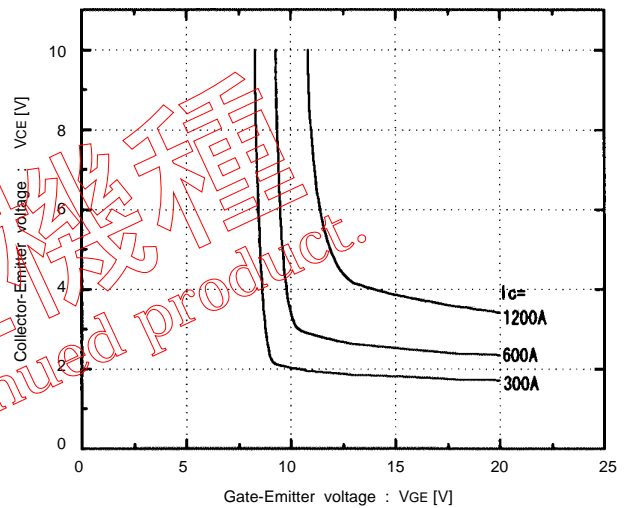
Collector current vs. Collector-Emitter voltage  
T<sub>J</sub>=125°C



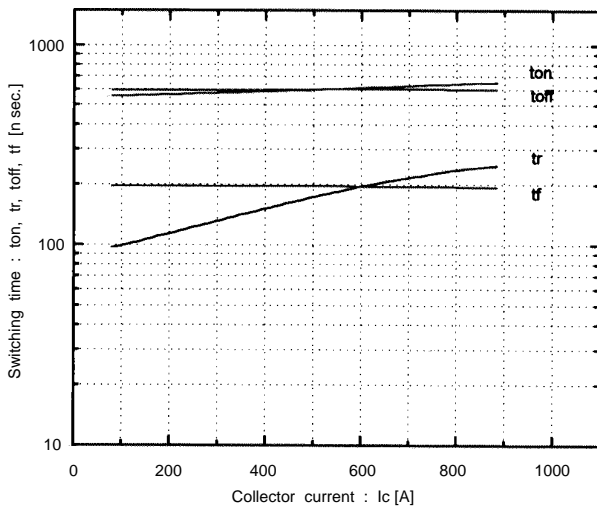
Collector-Emitter vs. Gate-Emitter voltage  
T<sub>J</sub>=25°C



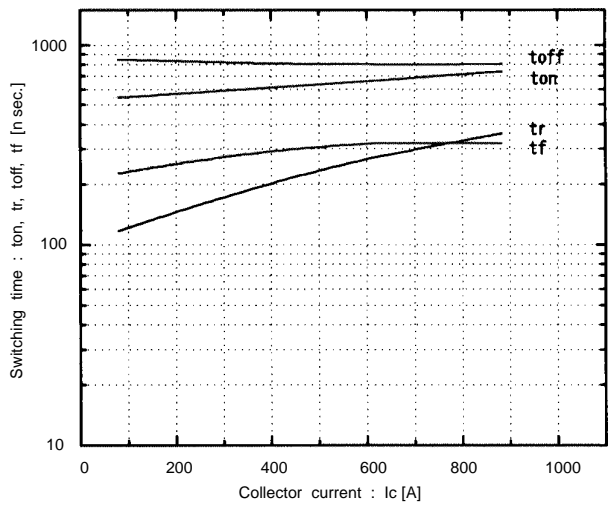
Collector-Emitter vs. Gate-Emitter voltage  
T<sub>J</sub>=125°C



Switching time vs. Collector current  
V<sub>CC</sub>=300V, R<sub>G</sub>=2.7 ohm, V<sub>GE</sub>=±15V, T<sub>J</sub>=25°C

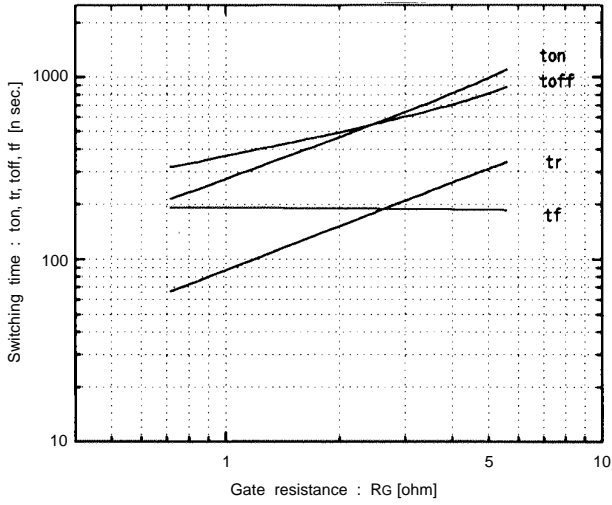


Switching time vs. Collector current  
V<sub>CC</sub>=300V, R<sub>G</sub>=2.7 ohm, V<sub>GE</sub>=±15V, T<sub>J</sub>=125°C

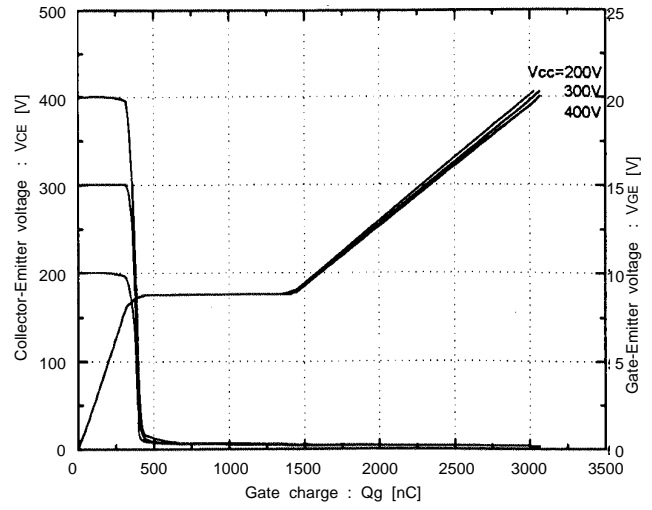


廢型機種  
 Discontinued product.

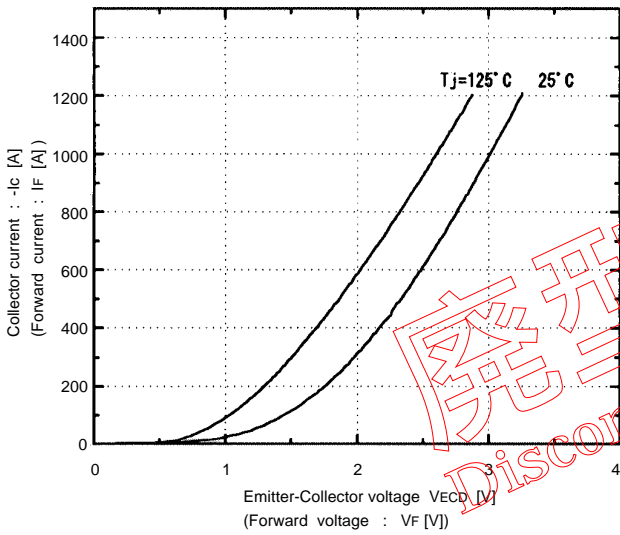
Switching time vs. RG  
Vcc=300V, Ic=600A, VGE=±15V, Tj=25°C



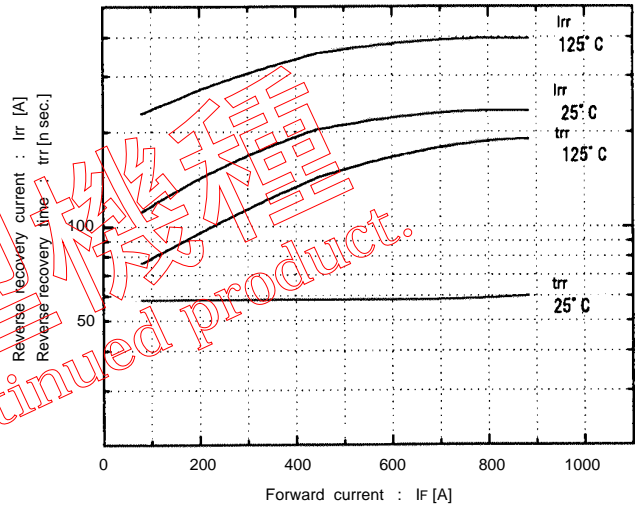
Dynamic input characteristics  
Tj=25°C



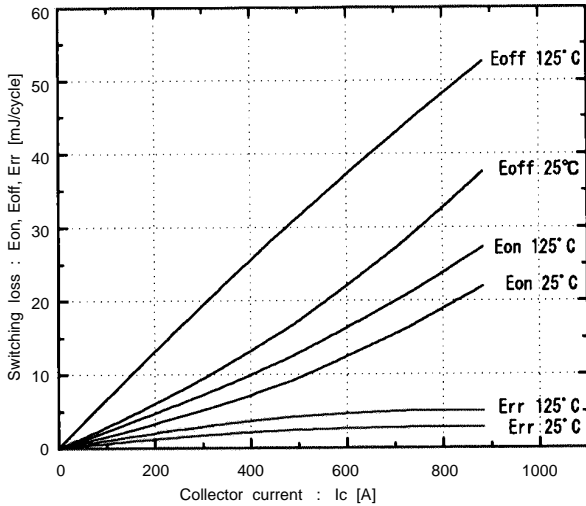
Forward current vs. Forward voltage  
VGE=0V



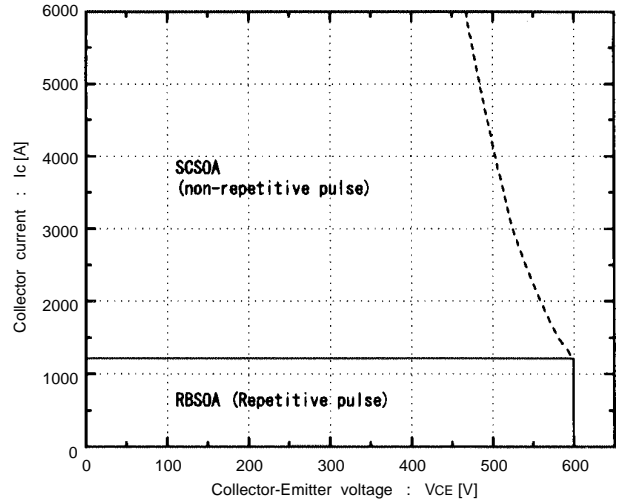
Reverse recovery characteristics  
trr, Irr, vs. IF

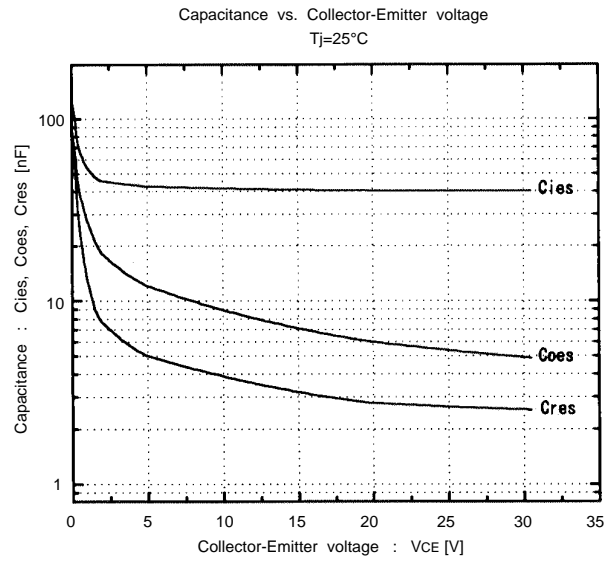
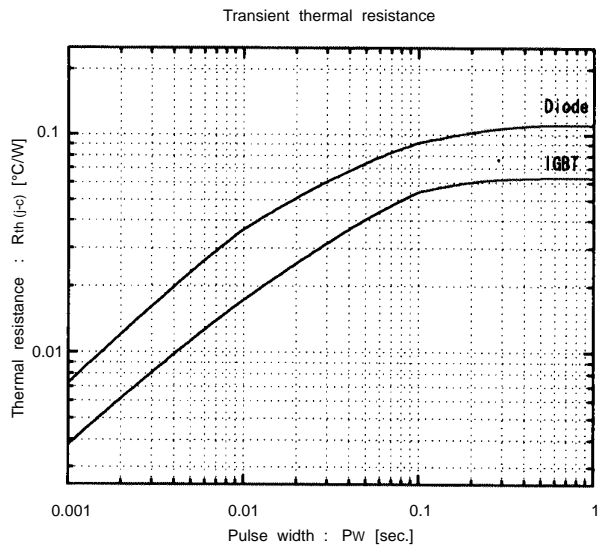


Switching loss vs. Collector current  
Vcc=300V, RG=2.7 ohm, VGE=±15V

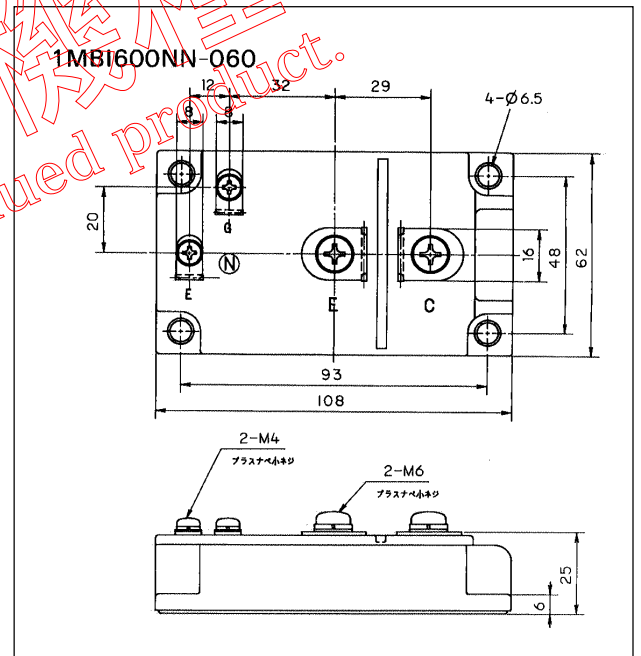
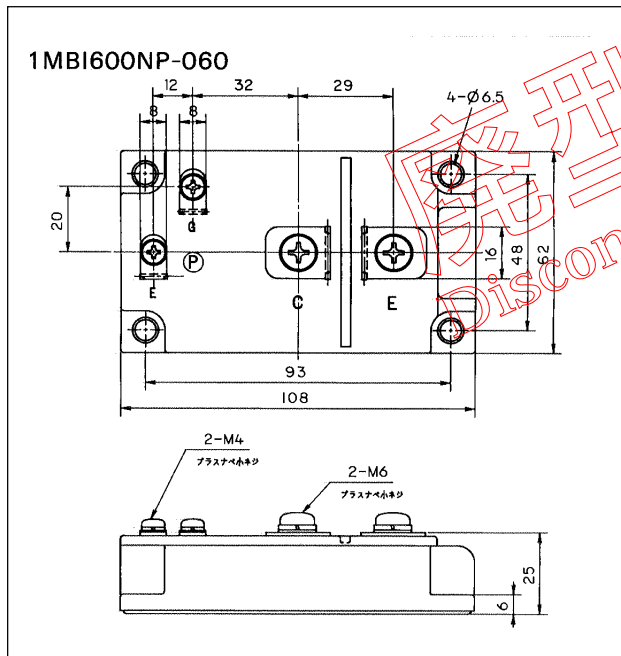


Reversed biased safe operating area  
+VGE=15V, -VGE ≤ 15V, Tj ≤ 125°C, RG ≥ 2.7 ohm





■ Outline Drawings, mm



mass : 370g