

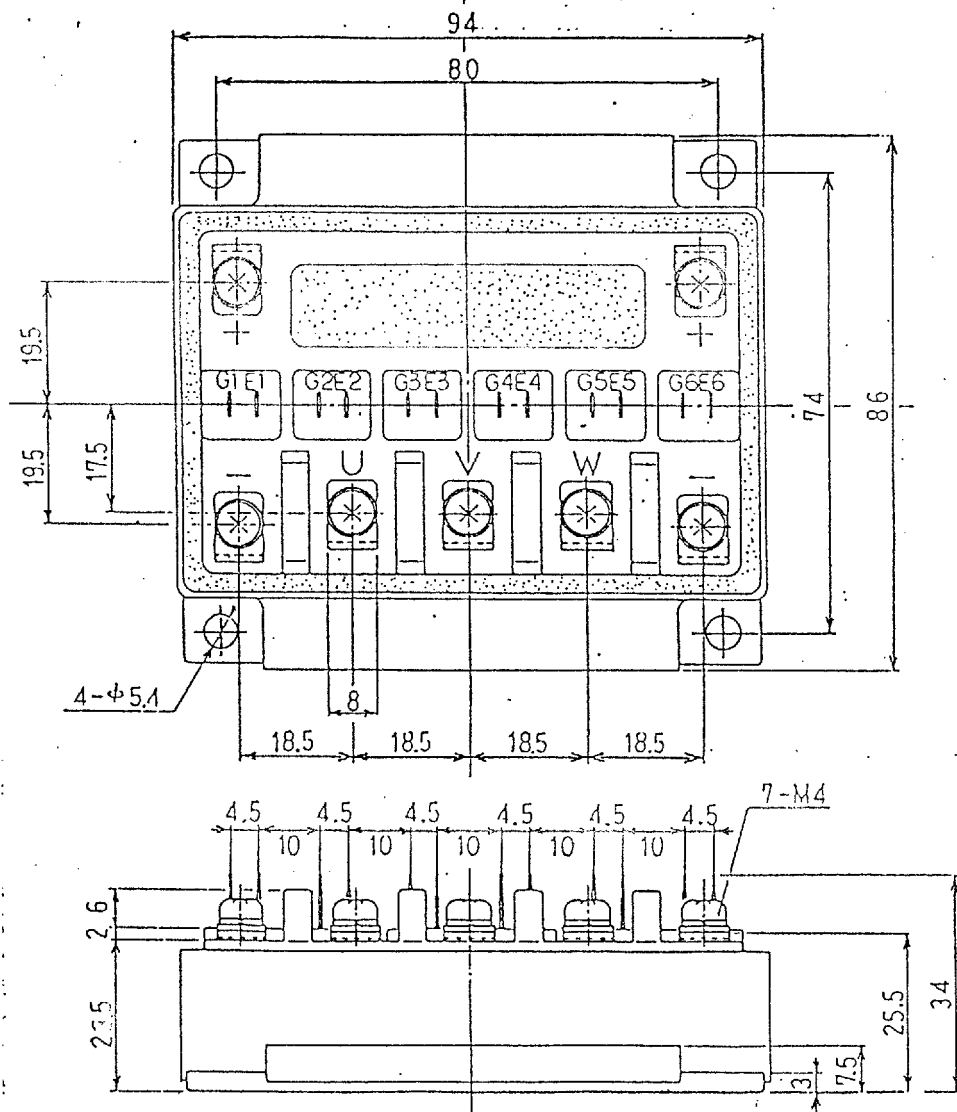
6MBI50J-120

(TENTATIVE)

1. Outline Drawing

Unit : mm

\* Isolation Voltage : AC 2500 V 1 minute

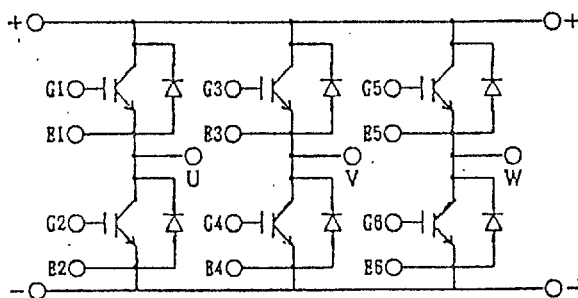


This material and the information herein is the property of Fuji Electric Co., Ltd. They shall be neither reproduced, copied, lent, or disclosed in any way whatsoever for the use of any third party nor used for the manufacturing purposes without the express written consent of Fuji Electric Co., Ltd.

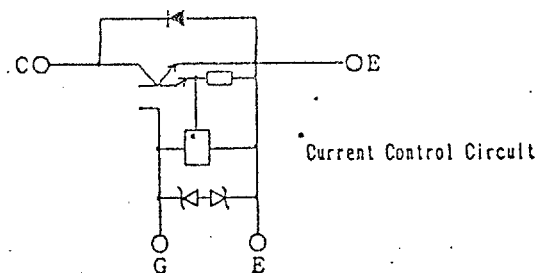
2) Revised date 2-11-93 A. Yamaguchi  
 b) Revised page 3, 7, 8 Apr. 5, '93 A. Yamaguchi

DATE	NAME	APPROVED	Fuji Electric Co., Ltd.	
DRAWN	Dec-11-'92	H. Arikawa	DWG. NO.	MT5 F 4956
CHECKED	Dec-15-'92	T. Miyasaka		
REVISIONS				

## 2. Equivalent Circuit of Module



## 3. Equivalent Circuit



## 4. Absolute Maximum Ratings (Tj=25°C)

Items	Symbols	Ratings	Units
Collector-emitter voltage	$V_{CES}$	1200	V
Gate-emitter voltage	$V_{GES}$	$\pm 20$	V
Collector current	Continuous	$I_c$	50
	1 ms	$I_c$ pulse	100
		$-I_c$	50
	1 ms	$-I_c$ pulse	100
Max.power dissipation	PC	320	W
Operating temperature	Tj	+150	°C
Storage temperature	Tstg	-40~+125	°C
Isolation voltage	Vis	AC 2500 (1min)	V
Screw Torque	Mounting *1	3.5	N·m
	Terminals *2	1.7	

Note : \*1 Recommendable Value : 2.5 ~ 3.5 N·m (M5)  
 \*2 Recommendable Value : 1.3 ~ 1.7 N·m (M4)

This material and the information herein is the property of Fuji Electric Co., Ltd. They shall be neither reproduced, copied, lent, or disclosed in any way whatsoever for the use of any third party nor used for the manufacturing purposes without the express written consent of Fuji Electric Co., Ltd.

		DATE	NAME	APPROVED	Fuji Electric Co., Ltd.	
DRAWN	- - -				DWG. NO.	MT5 F 4956
CHECKED	- - -					
REVISIONS						2/11

5. Static electrical characteristics ( at Tj=25°C unless otherwise specified )

Items	Symbols	Characteristics			Conditions		Units
		min.	typ.	max.			
Zero gate voltage collector current	I <sub>CEs</sub>			1.0	Tj= 25°C	V <sub>GE</sub> =0V	mA
					Tj=125°C	V <sub>CE</sub> =1200V	mA
Gate-emitter leakage current	I <sub>GES</sub>			15	V <sub>CE</sub> = 0 V	V <sub>GE</sub> =±20V	μA
Gate-emitter threshold voltage	V <sub>GE(th)</sub>		5.0		V <sub>CE</sub> =20V	I <sub>C</sub> =50mA	V
Collector-emitter saturation voltage	V <sub>CE(sat)</sub>		2.2		V <sub>GE</sub> =15V	I <sub>C</sub> =50A	V

6. Dynamic ratings ( at Tj=25°C unless otherwise specified )

Items	Symbols	Characteristics			Conditions	Units
		min.	typ.	max.		
Input capacitance	C <sub>ies</sub>		6000		V <sub>GE</sub> = 0 V	p F
Output capacitance	C <sub>oes</sub>		-		V <sub>CE</sub> =10V	
Reverse transfer capacitance	C <sub>res</sub>		-		f = 1 MHz	
Turn-on time	t <sub>on</sub>		0.70		V <sub>CC</sub> =600V I <sub>C</sub> = 50A V <sub>GE</sub> =±15V R <sub>θ</sub> = 24Ω	μ s
	t <sub>r</sub>		0.30			
Turn-off time	t <sub>off</sub>		0.95			
	t <sub>f</sub>		0.20			

This material and the information herein is the property of Fuji Electric Co., Ltd. They shall be neither reproduced, copied, lent, or disclosed in any way whatsoever for the use of any third party nor used for the manufacturing purposes without the express written consent of Fuji Electric Co., Ltd.

	DATE	NAME	APPROVED	Fuji Electric Co., Ltd.	
DRAWN	- -			DWG. NO.	<b>MT5 F 4956</b>
CHECKED	- -				
REVISIONS					

7. Characteristics of reverse diode ( at Tj=25°C unless otherwise specified )

Items	Symbols	Characteristics			Conditions	Units
		min.	typ.	max.		
Diode forward on-voltage	V <sub>F</sub>		2.5		I <sub>F</sub> = 50A V <sub>CE</sub> = 0V	V
Reverse recovery time	t <sub>rr</sub>			350	I <sub>F</sub> = 50A -di/dt = 150A/μs	ns

8. Thermal resistance characteristics

Items	Symbols	Characteristics			Conditions	Units
		min.	typ.	max.		
Thermal resistance	R <sub>th(j-c)</sub>			0.391	IGBT(MBT)	°C/W
	R <sub>th(j-c)</sub>			0.749	Diode	
	* R <sub>th(c-f)</sub>		0.05		the base to cooling fin	

\* This is the value which is defined mounting on the additional cooling fin with thermal compound.

This material and the information herein is the property of Fuji Electric Co., Ltd. They shall be neither reproduced, copied, lent, or disclosed in any way whatsoever for the use of any third party nor used for the manufacturing purposes without the express written consent of Fuji Electric Co., Ltd.

		DATE	NAME	APPROVED	Fuji Electric Co., Ltd.	
DRAWN	- - -				DWG. NO.	MT5 F 4956 4/11
CHECKED	- - -					
REVISIONS						