

IGBT MODULE (U series) 600V / 75A



■ Features

- Low $V_{CE(sat)}$
- Compact Package
- P.C. Board Mount Module

■ Applications

- Inverter for Motoe Drive
- AC and DC Servo Drive Amplifier
- Uninterruptible Power Supply

■ Maximum ratings and characteristics

● Absolute maximum ratings ($T_c=25^{\circ}\text{C}$ unless otherwise specified)

Item	Symbol	Condition	Rating	Unit
Collector-Emitter voltage	V_{CES}		600	V
Gate-Emitter voltage	V_{GES}		± 20	V
Collector current	I_c	Continuous	75	A
	I_{cP}	1ms	150	
	$-I_c$		75	
	$-I_c$ pulse		150	
Collector power dissipation	P_c	1 device	255	W
Operating junction temperature	T_j		+150	$^{\circ}\text{C}$
Storage temperature	T_{stg}		-40 to +125	$^{\circ}\text{C}$
Isolation voltage	V_{iso}	AC : 1 minute	AC 2500	V
			AC 2500	V
Mounting screw torque			3.5 *1	N·m

*1 Recommendable value : 2.5 to 3.5 N·m (M5)

*2 All terminals should be connected together when isolation test will be done.

*3 Two thermistor terminals should be connected together, each other terminals should be connected together and shorted to base plate when isolation test will be done.

● Electrical characteristics (Tj=25°C unless otherwise specified)

Item	Symbol	Condition	Characteristics			Unit		
			Min.	Typ.	Max.			
Inverter	Zero gate voltage collector current	ICES	VCE=600V, VGE=0V	-	-	1.0	mA	
	Gate-Emitter leakage current	IGES	VCE=0V, VGE=±20V	-	-	200	nA	
	Gate-Emitter threshold voltage	VGE(th)	VCE=20V, Ic=75mA	6.2	6.7	7.7	V	
	Collector-Emitter saturation voltage	VCE(sat) (terminal)	VGE=15V Ic=75A	Tj=25°C	-	2.20	2.50	V
				Tj=125°C	-	2.50	-	
		VCE(sat) (chip)	Tj=25°C	-	1.85	-		
			Tj=125°C	-	2.15	-		
	Input capacitance	Cies	VGE=0V, VCE=10V, f=1MHz	-	5.4	-	nF	
	Turn-on time	ton	VCC=300V	-	0.42	1.20	µs	
		tr	Ic=75A	-	0.24	0.60		
		tr(i)	VGE=±15V	-	0.05	-		
	Turn-off time	toff	RG= 47 Ω	-	0.42	1.20	µs	
		tf		-	0.03	0.45		
	Forward on voltage	VF (terminal)	VGE= 0 V IF=75A	Tj=25°C	-	1.95	2.30	V
				Tj=125°C	-	2.00	-	
VF (chip)		Tj=25°C	-	1.60	-			
		Tj=125°C	-	1.65	-			
Reverse recovery time	trr	IF=75A	-	-	0.35	µs		
Lead resistance, terminal-chip *	R lead		-	4.1	-	mΩ		
Thermistor	R	T=25°C	-	5000	-	Ω		
		T=100°C	465	495	520			
B value	B	T=25/50°C	3305	3375	3450	K		

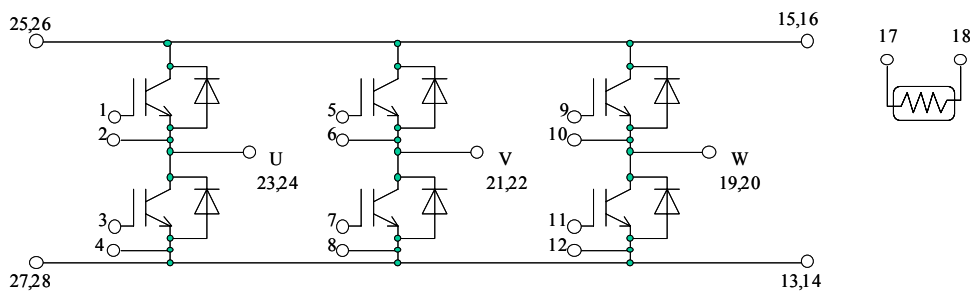
* Biggest internal terminal resistance among arm.

● Thermal resistance Characteristics

Item	Symbol	Condition	Characteristics			Unit
			Min.	Typ.	Max.	
Thermal resistance (1 device)	Rth(j-c)	IGBT	-	-	0.49	°C/W
		FWD	-	-	0.79	
Contact thermal resistance *	Rth(c-f)	With thermal compound	-	0.05	-	

* This is the value which is defined mounting on the additional cooling fin with thermal compound

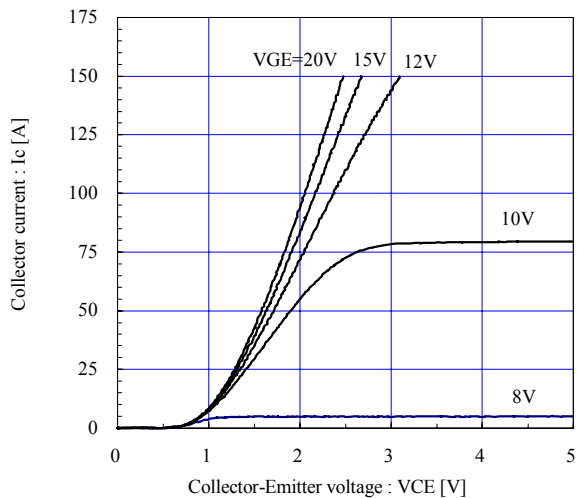
■ Equivalent Circuit Schematic



■ Characteristics (Representative)

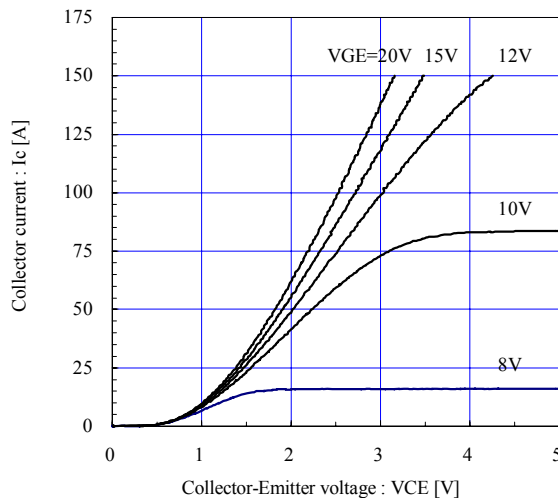
Collector current vs. Collector-Emitter voltage (typ.)

$T_j = 25^\circ\text{C}$ / chip



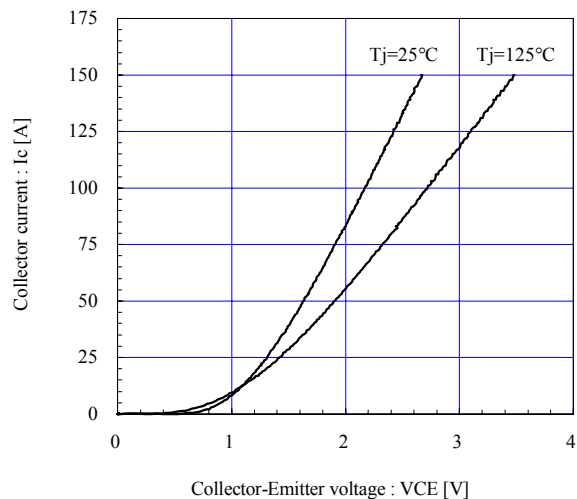
Collector current vs. Collector-Emitter voltage (typ.)

$T_j = 125^\circ\text{C}$ / chip



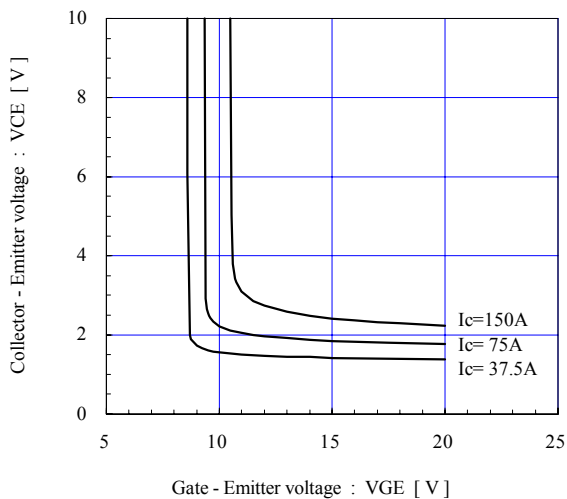
Collector current vs. Collector-Emitter voltage (typ.)

$V_{GE} = 15\text{V}$ / chip



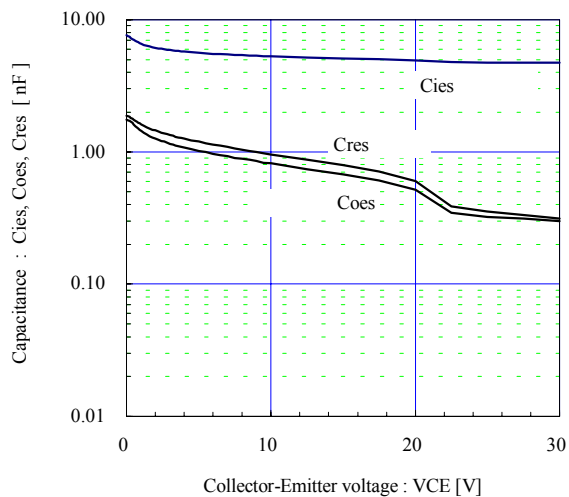
Collector-Emitter voltage vs. Gate-Emitter voltage (typ.)

$T_j = 25^\circ\text{C}$ / chip



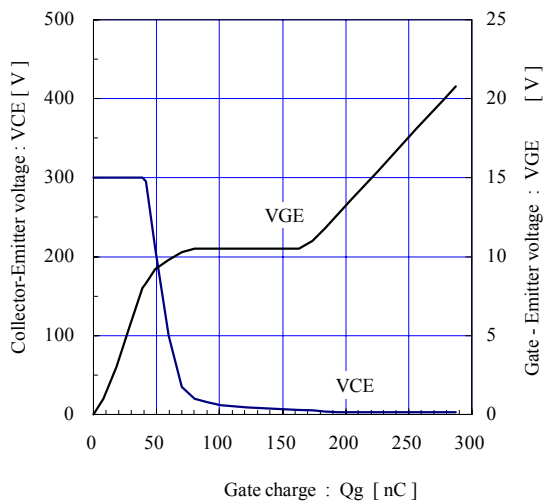
Capacitance vs. Collector-Emitter voltage (typ.)

$V_{GE} = 0\text{V}$, $f = 1\text{MHz}$, $T_j = 25^\circ\text{C}$

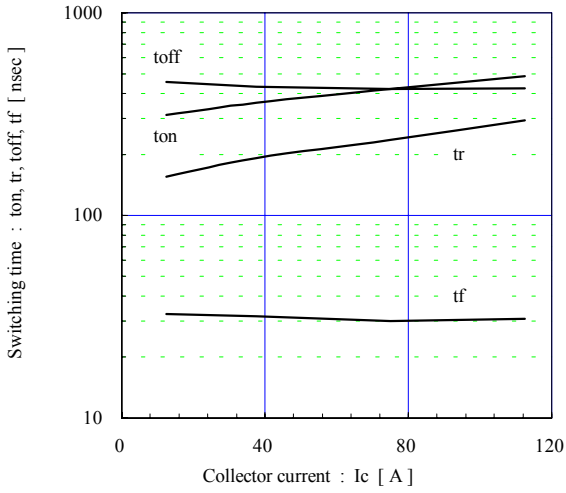


Dynamic Gate charge (typ.)

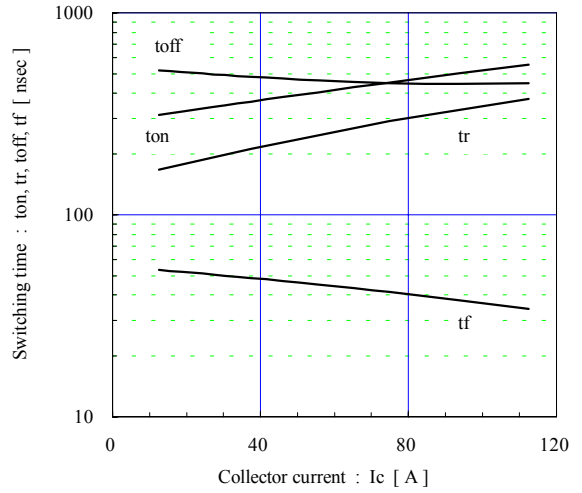
$V_{CC} = 300\text{V}$, $I_c = 75\text{A}$, $T_j = 25^\circ\text{C}$



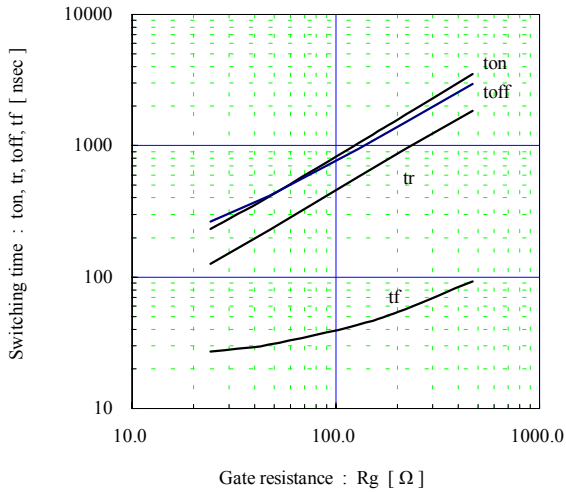
Switching time vs. Collector current (typ.)
 $V_{cc}=300V, V_{GE}=\pm 15V, R_g=47\Omega, T_j=25^\circ C$



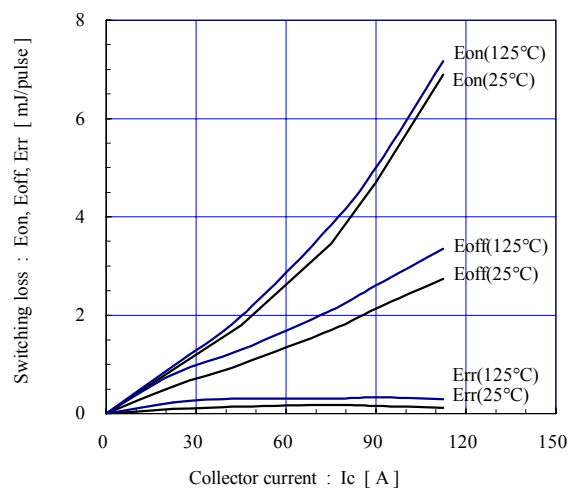
Switching time vs. Collector current (typ.)
 $V_{cc}=300V, V_{GE}=\pm 15V, R_g=47\Omega, T_j=125^\circ C$



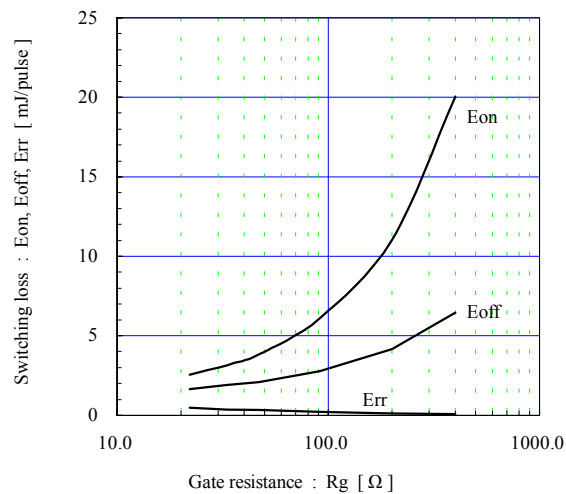
Switching time vs. Gate resistance (typ.)
 $V_{cc}=300V, I_c=75A, V_{GE}=\pm 15V, T_j=25^\circ C$



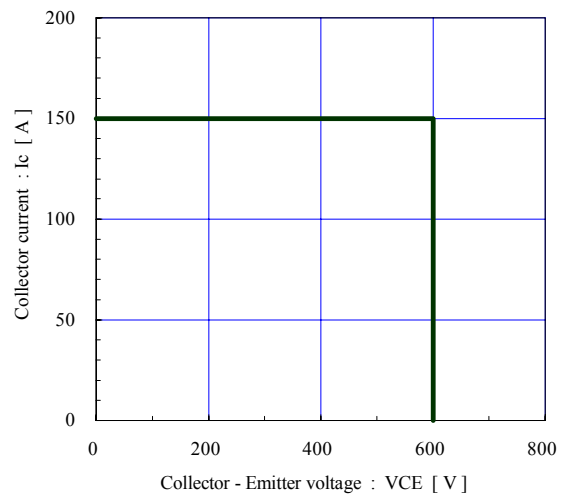
Switching loss vs. Collector current (typ.)
 $V_{cc}=300V, V_{GE}=\pm 15V, R_g=47\Omega$



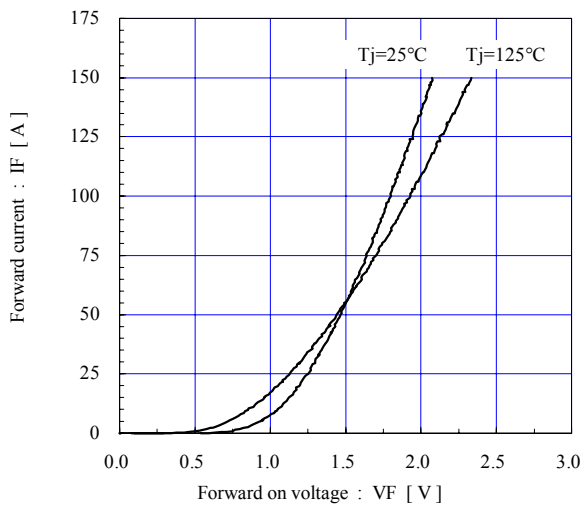
Switching loss vs. Gate resistance (typ.)
 $V_{cc}=300V, I_c=75A, V_{GE}=\pm 15V, T_j=125^\circ C$



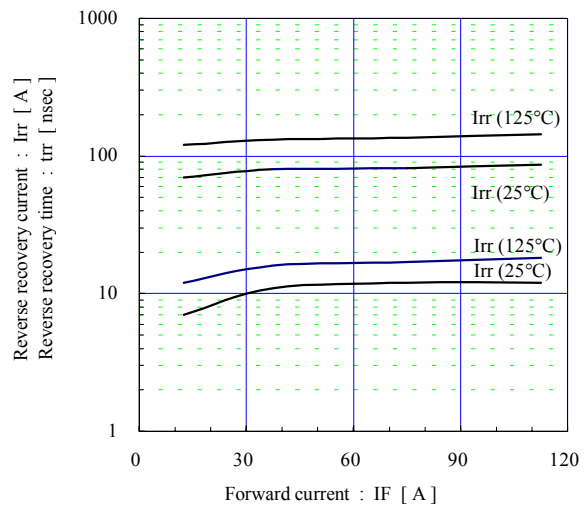
Reverse bias safe operating area (max.)
 $+V_{GE}=15V, -V_{GE} \leq 15V, R_g \geq 47\Omega, T_j \leq 125^\circ C$



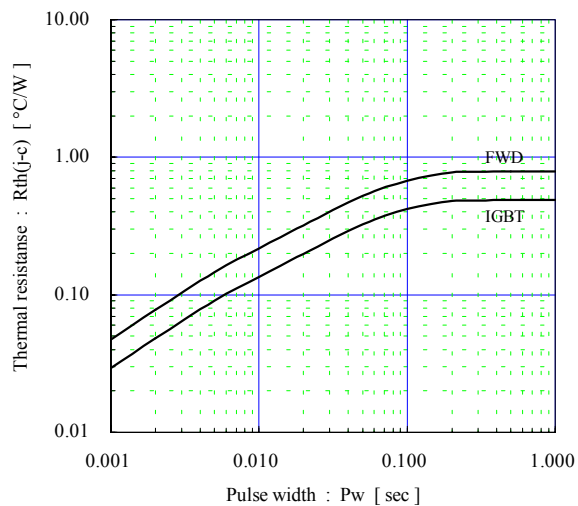
Forward current vs. Forward on voltage (typ.)
chip



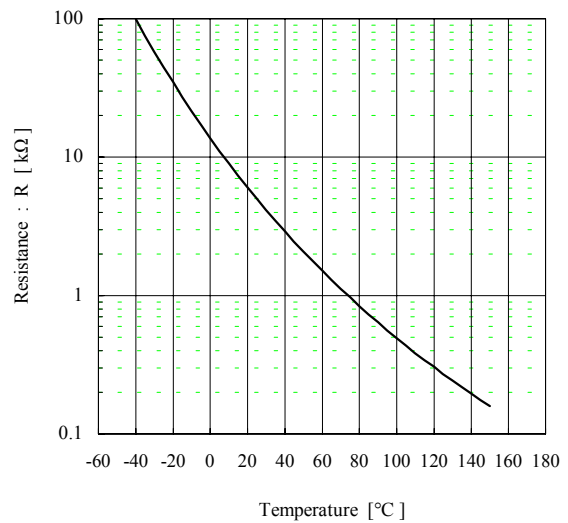
Reverse recovery characteristics (typ.)
Vcc=300V, VGE=±15V, Rg=47Ω



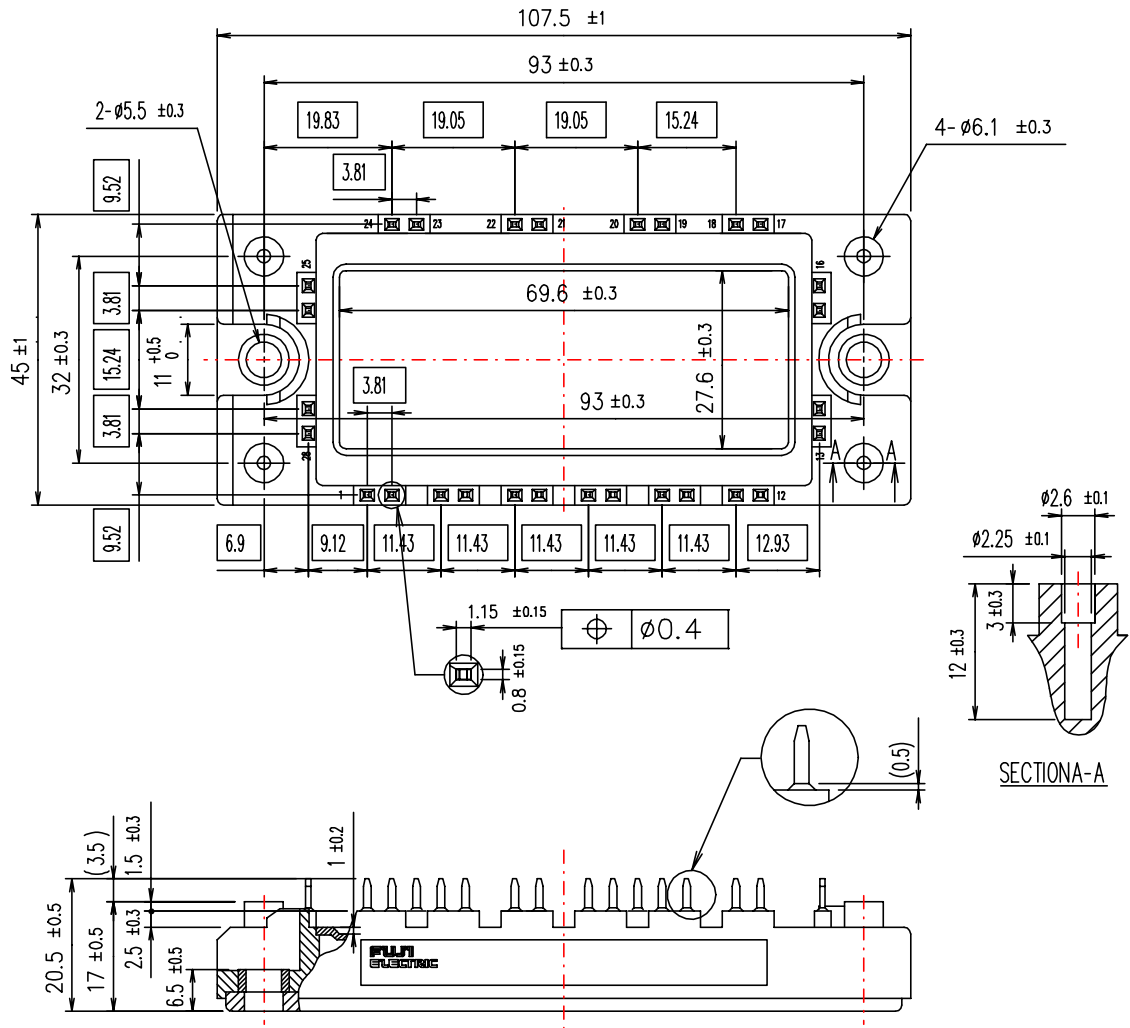
Transient thermal resistance (max.)



Temperature characteristic (typ.)



■ Outline Drawings, mm



□ shows theoretical dimension.
 () shows reference dimension.