

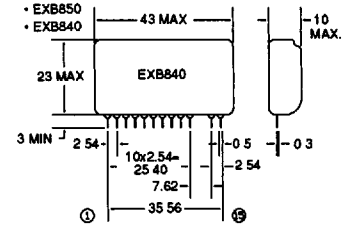
Power Darlington Modules

T-39-31



900 VOLT IGBTs (FOR RESONANT APPLICATIONS)

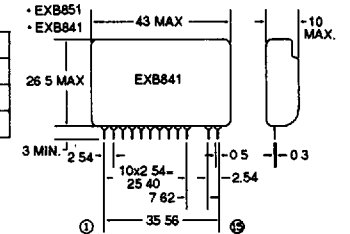
Device Type	V _{ces} Volts (min)	I _c Amps (min)	R _{th(j-c)} °C/Watts (max)	V _{ce(th)} Volts (max)	V _{ce(sat)} Volts (max)	t _{fl} μs (max)	t _{fd} μs (max)	Package
IMB50-090A	900	50	0.83	6	3.6	0.5	1.0	T03P
MBT001	900	60	0.41	6	4.0	0.5	1.0	T03PL



IGBT GATE DRIVERS

IGBT	600 V IGBT drive		1200 V IGBT drive	
	Up to 150A	Up to 400A	Up to 75A	Up to 300A
Standard type	EXB850	EXB851	EXB850	EXB851
High-speed type	EXB840	EXB841	EXB840	EXB841

Notes: 1. Standard type: Signal delay in drive circuit; Up to 4 μs
 2. High-speed type: Signal delay in drive circuit; Up to 1 μs



INTELLIGENT POWER MODULES (IPM)

GENERAL DESCRIPTION

Fuji has recently introduced Smart Power, Intelligent Power Modules (IPM) for motor controllers. The modules integrate: power electronics, base drive, protection and isolation into one package.

IPMs are designed for 230VAC, 3-phase operation with current ranges from 10A to 150A. Packages contain either six or seven switching devices. Compatible soft start converters and dynamic break modules are also available.

BENEFITS

- Reduce design time.
- Isolated signal inputs.
- No base drive design required.
- Logic level controllable.

FEATURES

- Overcurrent protection.
- Overtemperature protection.
- Diagnostic output.
- Shunt regulator.

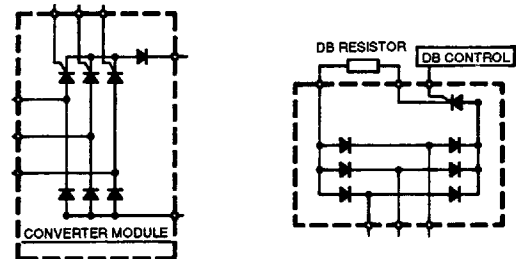
SELECTION GUIDE

Device Type	V _{CC} Volts (Max)	I _C Amps	P _C Watts (Per Transistor)
6D10A-050EJR	450	10	40
6D15A-050EJR	450	15	60
6D20A-050EJR	450	20	80
7D30A-050EHR	450	30	150
7D50A-050EHR	450	50	200
7D75A-050EHR	450	75	240
7D100A-050EHR	450	100	350
7D150A-050EHR	450	150	400

Converter and Dynamic Brake Modules Designed to be used with the IPM.

SELECTION GUIDE

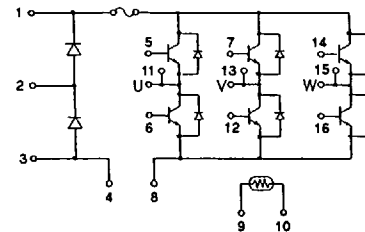
Device Type	V _{RRM} Volts	I _o (AV) Amps
4R3T120Y-080	800	20
4R3T130Y-080	800	30
4R3T160Y-080	800	60
6R1T130Y-080	800	30



Inverter Modules

SELECTION GUIDE

Device Type	V _{ceo} Volts	I _c Amps	P _c Watts
2R6D15A-050AJV	600	15	60
2R6D20A-050AJV	600	20	80



FUJI Semiconductors • Imported and Distributed by:
Collmer Semiconductor, Inc.

14368 PROTON • DALLAS, TEXAS 75244 • 800-527-0251
 FAX 214/233-0481