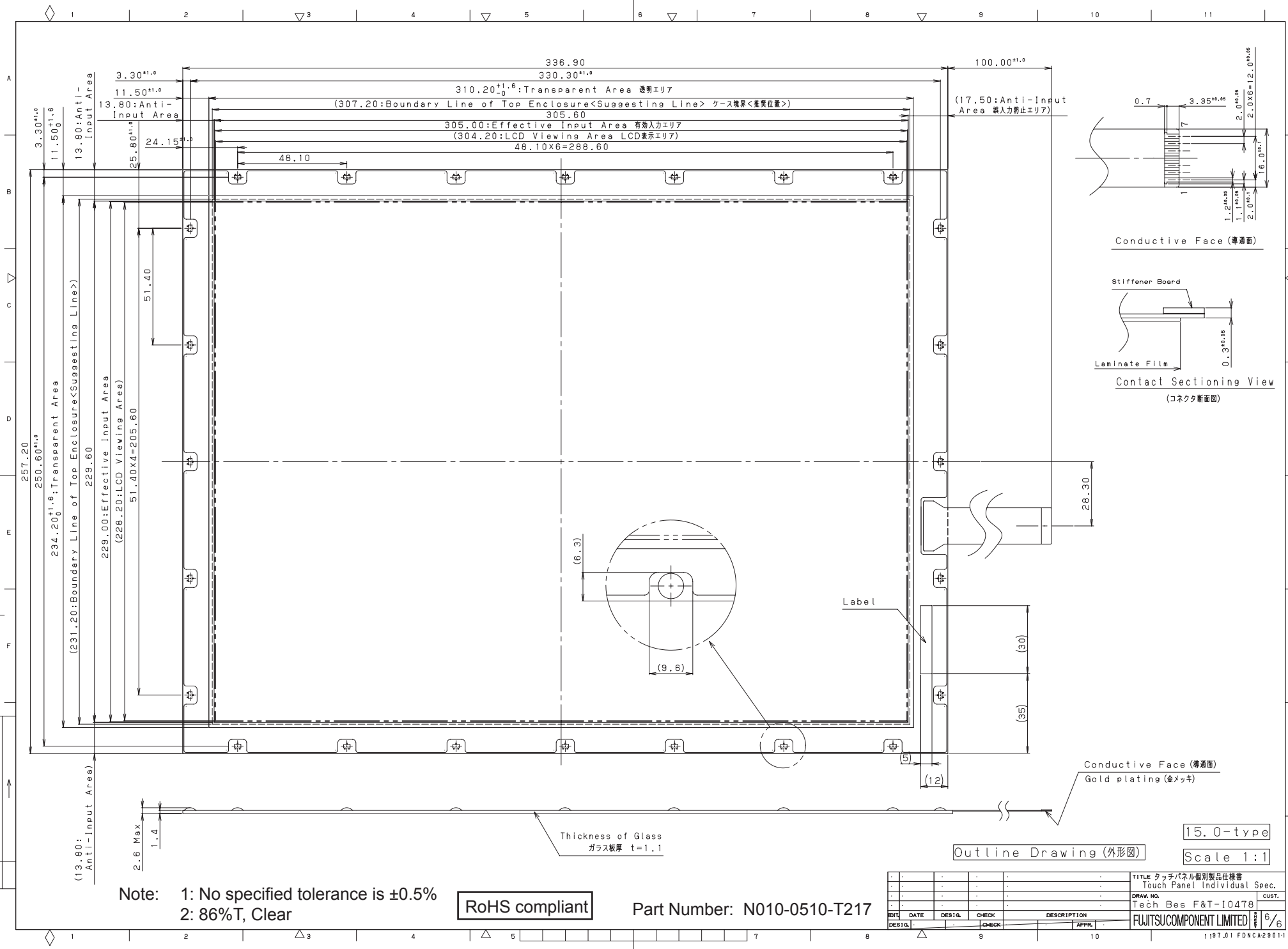


DATE DOCUMENT CONTROL SECTION



3.30^{+1.0}
11.50^{+1.0}
13.80:Anti-Input Area
25.80^{+1.0}
24.15^{+1.0}
48.10
51.40
257.20
250.60^{+1.0}
234.20^{+1.6}:Transparent Area
(231.20:Boundary Line of Top Enclosure<Suggesting Line>)
229.60
229.00:Effective Input Area
(228.20:LCD Viewing Area)
51.40x4=205.60
13.80:Anti-Input Area
11.50^{+1.0}
3.30^{+1.0}
336.90
330.30^{+1.0}
310.20^{+1.6}:Transparent Area 透明エリア
(307.20:Boundary Line of Top Enclosure<Suggesting Line> ケース境界<推奨位置>)
305.60
305.00:Effective Input Area 有効入力エリア
(304.20:LCD Viewing Area LCD表示エリア)
48.10x6=288.60
100.00^{+1.0}
(17.50:Anti-Input Area 入力力防止エリア)
0.7
3.35^{+0.05}
2.0^{+0.05}
2.0^{+0.05}
1.6^{+0.1}
1.2^{+0.05}
1.1^{+0.05}
2.0^{+0.05}
0.3^{+0.05}
28.30
30
35
12
2.6 Max
1.4
Thickness of Glass
ガラス板厚 t=1.1
Label
Conductive Face (導通面)
Gold plating (金メッキ)
15.0-type
Scale 1:1

Note: 1: No specified tolerance is ±0.5%
2: 86%T, Clear

RoHS compliant

Part Number: N010-0510-T217

TITLE タッチパネル個別製品仕様書 Touch Panel Individual Spec.				
DRAW. NO. Tech Bes F&T-10478				CUST.
FUJITSUCOMPONENT LIMITED				
1/6				
DATE	DESIGN	CHECK	DESCRIPTION	APPR.